

# mini discover

Our Chalet

Short Summer Youth Event



NEW FOR 2023!





Please read this information pack for full details of the Mini Discover event before making your booking. We recommend you look at details for all three of our mini summer events – Mini Discover, Mini Explore, and Mini Adventure – and choose the one that best suits your group’s interests and physical abilities.

When you have decided which event and which dates you would like to book you can send a booking enquiry [here](#).

If, after reading the information packs, you have questions about any of the events, please e-mail [info@ourchalet.waggs.org](mailto:info@ourchalet.waggs.org).

The table below gives a brief comparison of the three mini events to help you decide which events may be suitable for your group. It is important that you read the information pack for your chosen event carefully BEFORE you make a booking.

	Mini Discover	Mini Explore	Mini Adventure
Age range	11-18	12-18	12-18
Adventure park	X	✓	X
Cable car ride	✓	X	✓*
Pinning ceremony	✓	✓	✓
Suspension bridge	X	✓	X
Adelboden village	X	✓	X
Onsite day	Swiss culture	X	Survival
Climbing tower	X	✓	X
Woodcarver	✓	X	X
Summer toboggan	X	X	✓

\*Descent only, after Oschinensee hike.

### Dates and prices for Mini Discover 2023

Arrival by 12:30 on 7 August (afternoon and evening programme)

Full day and evening programme on 8 August

Departure after 13:00 on 9 August (morning programme)

Package Option	Leaders* and youth age 16+	Youth age 11-15
Indoor fully catered	CHF 270	CHF 256
Squirrel House self-catered	CHF 163	CHF 149
Camping self-catered	CHF 128	CHF 114

\*This price is for leaders within the adult:youth ratio of two leaders per eight youth participants. If places for additional leaders are available there may be an additional cost for the extra leaders. See our Summer Youth Event FAQ for details of the adult:youth ratio requirement.



# PROGRAMME



The next few pages give an overview of the programme activities included in this event, if you are unsure if any activity is suitable for your group, please contact [programme@ourchalet.wagggs.org](mailto:programme@ourchalet.wagggs.org) before making your booking.

**NOTE: All programme activities are subject to change depending on availability of suppliers and weather conditions.**

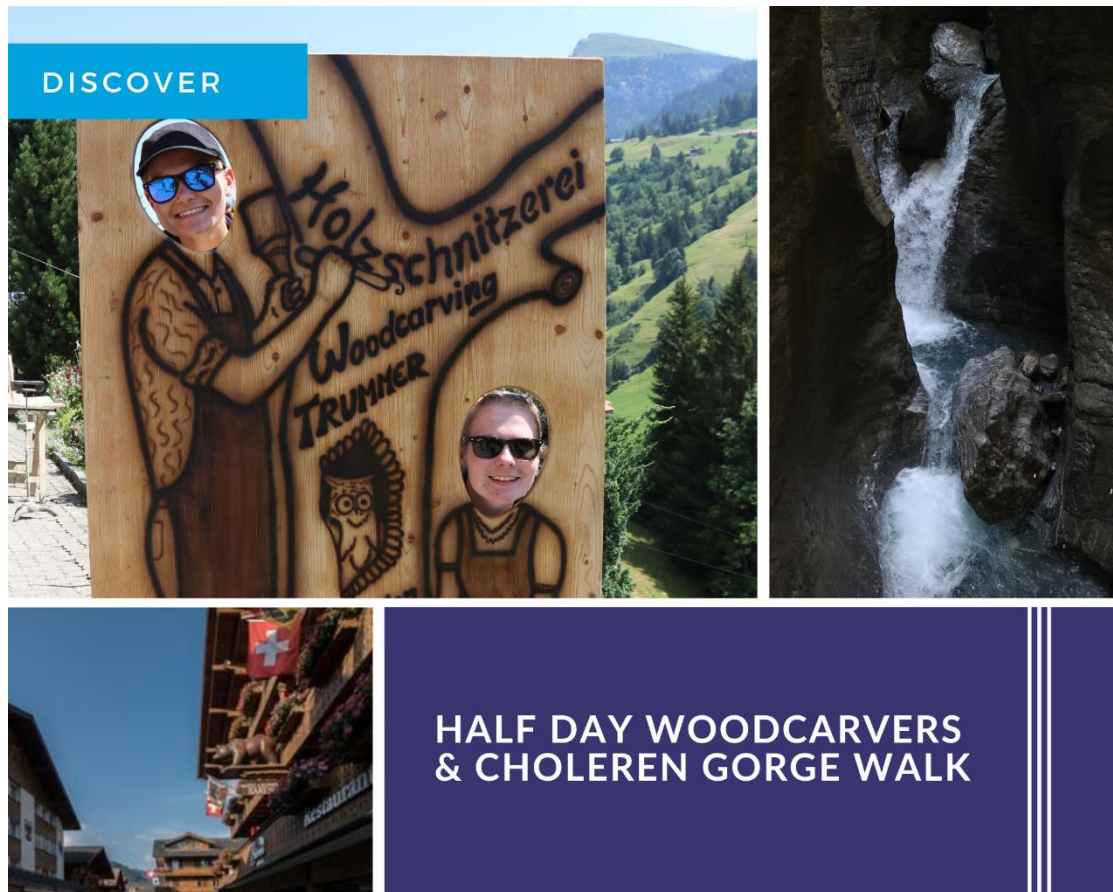
## Important information about programme:

- This event is open to Guides and Scouts aged 11-18. All participants must be socially and emotionally capable of taking part in an active weekend with peers of this age group.
- Leaders must accompany their youth participants on all programme activities and are responsible for first aid for their group at all times. When planning your trip please consider the physical fitness of your leader's as well as your youth participants.
- It is the responsibility of the group to check that activities meet their Member Organisations rules and are covered by their travel insurance.
- The transport options listed in the 'adaptations' are only available for participants with a permanent disability or medical condition that affects their mobility.
- In all other cases groups are responsible for any costs associated with additional transport for their participants, e.g. taxis in lieu of walking.

## Additional information for the Mini Discover event:

- The Mini Discover event programme starts at 14:00 on the arrival day. We strongly recommend all groups arrive by 12:30 at the latest to allow time to check in and eat picnic lunch before activities start.





The Trummer family have been running a woodcarving business since 1945, visitors can see woodcarving in action and watch as their own personalised woggles, trefoil badges, or other souvenirs are hand-decorated.

Part of the walk to the woodcarver takes us through Choleren Gorge. This impressive natural gorge has a series of bridges and stairs to allow visitors to walk safely through while admiring the view.

This day is guided by Our Chalet staff.

**Physical activity:**

Walking: 1.3km downhill (20mins) + 2km mostly uphill, including metal stairs through gorge section + 1.2km flat and downhill.

Choleren Gorge can be avoided via an alternative hiking trail, distances are similar for this route.

**Special considerations:** The Choleren Gorge operates a one-way system and can only be walked up the gorge. Participants need to be able to walk up steep flights of stairs, which can be slippery. The Gorge is not suitable for participants with a fear of heights.

**Adaptations:** For participants with physical disabilities transport, including wheelchair-accessible transport, can be arranged to replace the walking from Our Chalet to the woodcarver and return. The walk through the gorge is not accessible for those with limited mobility but can be partly viewed from the bridge above.







## ENGSTLIGENALP

Engstligenalp is located at 1,964m and offers spectacular views of the valley and the surrounding mountains, as well as Switzerland's second highest waterfall. The gondola (cable car) whisks participants up to the alp in 7 minutes with views of the waterfall below.

Walk to the waterfall, then ride the gondola to the alp, where staff will lead you on a 5km walk around the alp with stops for games and a picnic lunch along the way.

A visit to the cheesemaker and/or one of the mountain huts finishes the day before descending on the gondola. **Note: It is not possible to watch cheese being made.**

This day is guided by Our Chalet staff.

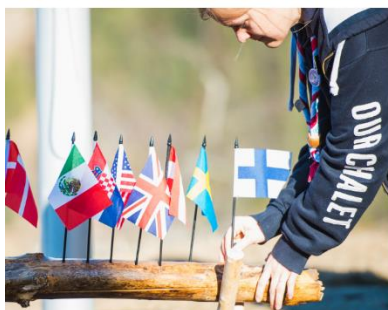
### Practical information:

Walking: 2 km, mostly downhill (30 mins) + 2.1 km mostly flat (1 hour) + 4.5 km flat (1 hour plus breaks) + 2km mostly uphill (40 mins).

**Special considerations:** The trail to the waterfall (2.1 km return) is a wide trail over unpaved ground with tree roots, stones and one short steep section.

**Adaptations:** For participants with physical disabilities transport, including wheelchair-accessible transport, can be arranged from Our Chalet to Engstligen base gondola station. The gondola is wheelchair accessible. The hike on the alp is wheelchair accessible on a gravel path.





## SWISS CULTURE HALF DAY ONSITE

Spend a half day at Our Chalet discovering Swiss culture through games, food, and stories.

From language to music to local legends there is lots to learn about Switzerland in a half day of activities led by Our Chalet staff.

**Practical information:**

This day takes place on site. Activities can be adapted to be inclusive for a range of abilities.







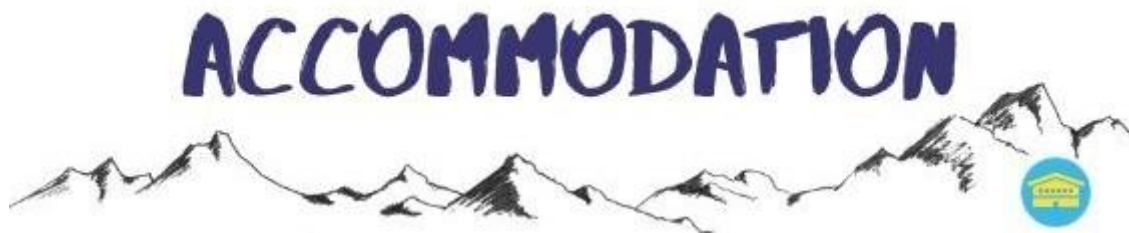
## Pinning Ceremony, Tour, & Campfire

As well as the programmes listed on the previous pages, your event will include a pinning ceremony and tour on your arrival day evening. Everyone taking part in the opening ceremony will receive a special Our Chalet pin only available to those who have visited the Centre. The ceremony is followed by a guided tour to help you learn your way around & the history of Our Chalet.

On your other evening at Our Chalet you take part in a campfire with opportunities to learn new songs and share old favourites. **Please note:** in recent summers we have been subject to a fire ban due to lack of rainfall. In this case we still run campfire but without lighting the fire.



# ACCOMMODATION



We offer three different accommodation packages; indoor, Squirrel House, and camping. These are the same for all three mini summer event packages. Prices for each option are listed on the first page of this Info Pack.

## Important information about accommodation:

- Our Chalet is open to Guides and Scouts of all genders. We are not able to guarantee single-gender hallways or buildings.
- Rooms/tents are allocated by Our Chalet and it is up to group leaders to allocate their participants to each room/tent.
- Rooms/tents are not shared between groups, unless multiple groups request to share with each other.
- Bed linen and towels are provided for indoor accommodation. Sleeping bags are not permitted in indoor accommodation.
- For fire safety reasons it is not possible to add extra beds or mattresses to any of our rooms.
- No vehicles or camper vans are permitted on our campsite.
- Spycher House and our campsite are partially wheelchair accessible. E-mail [info@ourchalet.waggs.org](mailto:info@ourchalet.waggs.org) for full details of wheelchair accessibility.
- **Note: In summer only indoor accommodation is catered. Campers and those staying in Squirrel House must self-cater all meals.**

## Check in time

We strongly recommend arriving by 12:30 on arrival day to give you time to check in and eat lunch before programme activities start at 14:00. You can check in anytime from 08:00, however, bedrooms will not be available until later in the day. Luggage can be stored securely and you can access the outdoor areas of our site and our indoor common areas.

While we try our best to have all bedrooms and tents ready by 12:30, all our cleaning is done by a small team of volunteer staff and our summer events run back-to-back requiring a quick turnaround and relying heavily on the previous guests leaving things tidy. In some cases bedrooms/tents may not be ready before programme starts at 14:00. When this happens we will store your luggage securely for you and there will be time to move it to your bedrooms/tents between the end of afternoon programme and dinner.







The package price includes two nights accommodation, meals from packed lunch on arrival day to packed lunch on departure day, luggage transfers, and all event programme activities.

Our indoor accommodation is offered across two buildings:

Main Chalet opened in 1932 and offers dorm rooms, triple rooms, twin rooms, and a single room. The largest dorm room can sleep up to 14 participants. None of the rooms in Main Chalet have bunk beds.

Spycher House opened in 1999 and offers one dorm room (sleeps up to eight participants), quad rooms, twin rooms, and two single rooms. Some rooms in Spycher House have bunk beds.

Rooms will be assigned to your group by our office staff based on your needs. To maximise availability, groups may be split across both buildings. Our staff always ensure at least one leader is in the same building as participants from their group.

Participants from different groups do not usually share rooms (unless by request), however, different groups will share the same common facilities such as bathrooms and hallways. Our Chalet is open to Scouts and Guides of all genders.

For details of wheelchair accessibility in our indoor accommodation please e-mail [info@ourchalet.waggggs.org](mailto:info@ourchalet.waggggs.org). As a broad overview, accommodation suitable for manual wheelchair users is available in Spycher House. Users of powered wheelchairs or mobility scooters who can transfer to a manual chair without the use of a hoist can also access this accommodation.



**Discover Summer Programme**  
Our Chalet Youth Event for Guides & Scouts Age 11-18





## Squirrel House



The package price includes two nights accommodation, luggage transfers, and all event programme activities. **Please note:** there is a minimum group size of eight to book Squirrel House for a Summer Youth Event.

Squirrel House is perfect for smaller groups who would prefer not to camp but do not need the full indoor accommodation package. **In summer Squirrel House is available as self-catering accommodation only.**

Squirrel House sleeps up to six people downstairs on bunk beds and up to ten people upstairs on mattresses. There is a small kitchen in the downstairs sleeping area that can be used for self-catering.

Squirrel House has two toilets – one downstairs and one upstairs – but no showers. Participants staying in Squirrel House can use the showers in Main Chalet.

Squirrel House is not suitable for wheelchair users and is not recommended for those with limited mobility.

Grocery deliveries are available from Coop@Home and can be delivered Monday-Saturday.







The package price includes two nights accommodation, luggage transfers, and all event programme activities.

Our campsite can accommodate up to 30 people. Tents including inflatable mattresses are included in the cost. For hygiene reasons participants must bring their own sleeping bags.

Camping is available as a self-catering option only. Camp House contains a small kitchen for the use of campers. Equipment for outdoor cooking is also available.

Toilets and showers are available in Camp House. The upstairs of Camp House can be used for shelter in wet/stormy weather. It is approximately a five minute walk from the campsite to Main Chalet and Spycher House.

Our campsite is partially wheelchair accessible, for full details please e-mail [info@ourchalet.waggs.org](mailto:info@ourchalet.waggs.org).



**Discover Summer Programme**  
Our Chalet Youth Event for Guides & Scouts Age 11-18





The following information applies to the **indoor accommodation package only**. Groups choosing the camping and Squirrel House packages must self-cater for all meals.

For groups booked on to the indoor accommodation package all meals from packed lunch arrival day to packed lunch on departure day are included in the cost and provided by Our Chalet. The kitchen at Our Chalet is operated by the Kitchen Manager and a team of volunteer staff. We do our best to accommodate dietary requirements, however, if your group has a participant with a severe allergy or complex dietary requirement we recommend you discuss your needs prior to booking.

### **Breakfast**

A cold breakfast of cereals, yoghurt, bread, cheese, and fruit is available every morning in a self-service buffet style. Hot and cold drinks are also included.

### **Packed lunch**

Participants make a packed lunch (sandwiches, fruit, snacks, etc.) each morning to take with them on programme. All participants are required to bring a lunch box or bag to carry their lunch.

### **Dinner**

Dinner is served at one sitting and offers one option for everyone. Typical dinners include Swiss dishes such as rösti and camp favourites like chilli or pasta. Dinners always include salad or vegetables and are two courses with a main meal and dessert.

Special diet meals, including vegetarian, vegan, and gluten-free are available only to participants who have notified us in advance of their need for a special meal. Your pre-arrival paperwork will ask you to specify dietary requirements for each participant in your group.





We look forward to welcoming you to your home in the Swiss Alps!

